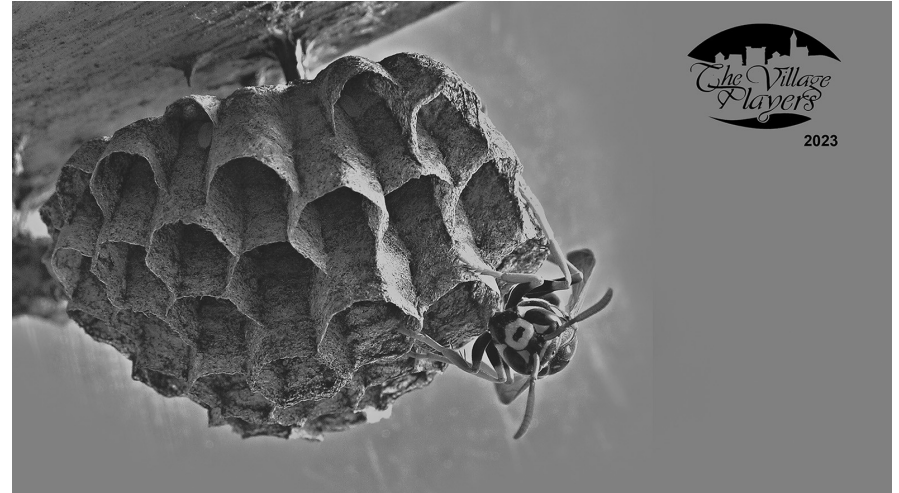




Thank you for your patronage and support
of the performing arts at
The Village Players
Wolfeboro, New Hampshire!

See you again soon!



EXTREMITIES

William Mastrosimone

Directed by Michaela Andruzzi and Christian Boudman
Produced by Joshua Spaulding

March 31, April 1, 7 & 8 at 7:30
April 2 at 2:00

The Village Players Theater
51 Glendon St, Wolfeboro, NH

Generously sponsored by Linda's Flowers

Extremities is presented by arrangement with
Concord Theatricals on behalf of Samuel French, Inc.
www.concordtheatricals.com

Director's Note:

Extremities is a play that will make us all uncomfortable. It will evoke emotions and promote dialogue. This play is less about a sexual assault and more about societal responses to violence against women. It examines the extremes of our human emotions: mercy, hatred, compassion, humanity, and retribution. It is a play that lays bare our human nature. It should make us squirm. It should challenge us. The cast and crew of this production welcome you and hope that this is a play not soon forgotten.

~ Michaela Andruzzi

Cast Bios

Lawrence Goodrow (Raul)

Emily Judkins (Patricia)

Emily is always happy for the chance to pretend to be someone else. She would like to thank all the little people who made this show possible. The big people who made it possible aren't too bad either.

Toni Urquhart (Terri)

Last seen on stage in 2017 in the VP production of *Biloxi Blues*, Toni is excited to return to the stage in the role of Paula Paterno. Toni is a longtime actress with the Village Players, making her debut in The VP's *South Pacific* in 2001, she has been in several shows throughout the years. Outside of acting she enjoys hiking, surfing and spending time with family. She wishes to thank her mother for introducing her to the Village Players Theater, and encouraging her love of acting, her husband Jeff and their children for their love and support, and her many friends here at the Village Players.

Jeannie LeGrow (Marjorie)

This is Jeannie's second performance with the Village Players. She would like to thank her family for their continued support and love.

Extremities

Setting: 1982, between Trenton and Princeton, New Jersey, where the cornfield meets the highway, the living room of an old farmhouse.

Act One

Scene One:

Scene Two:

Scene Three:

Act Two

Scene One:

Scene Two:

Cast

Raul
Marjorie
Patricia
Terri

Lawrence Goodrow
Jeannie LeGrow
Emily Judkins
Toni Urquhart

Crew

Director
Assistant Director
Producer
Stage Manager
Lights and Sound
Costumes
House Managers

Set Design
Set Construction

Tickets
Program
Poster
Banner

Photography
Publicity

Michaela Andruzzi
Christian Boudman
Joshua Spaulding
Paul Stewart
Max Gehring
Michaela Andruzzi
Joyce Chandler-Smith
Stefanie Marsh
Jay Sydow
Karen XXX, Russ Ellis,
Keith Lion, Travis Norman,
Joshua Spaulding, Jay Sydow,
Bob Tuttle
Carol Bense
Cathy Fraser
Stefanie Marsh
Jerome Holden
Jeannette D'Onofrio
Michael Wilfert
Stefanie Marsh
Joshua Spaulding

Special Thanks

Winni Paint
Matt Johnson

Bob Tuttle
H & H Exteriors